

# Show, Don't Tell

This character is **anxious**.



Describe their **facial expression**.

---

---

---

---

---

---

Describe their **body language**.

---

---

---

---

---

---

Describe their **actions**.

---

---

---

---

---

---

Now, write a descriptive paragraph which shows how your character feels without directly telling the reader.

---

---

---

---

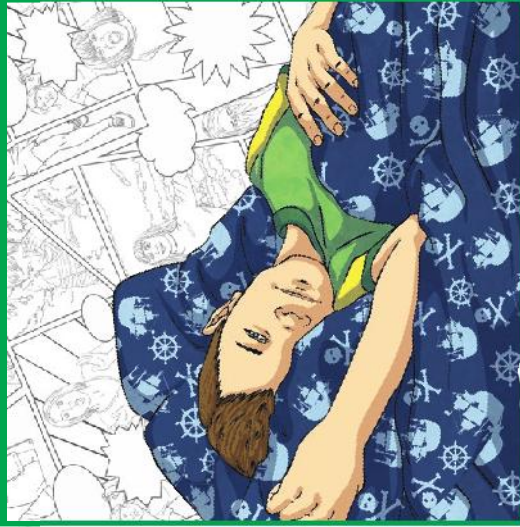
---

---



# Show, Don't Tell

This character is restless.



Describe their  
**facial expression.**

---

---

---

---

---

---

Describe their  
**body language.**

---

---

---

---

---

---

Describe their  
**actions.**

---

---

---

---

---

---

Now, write a descriptive paragraph which shows how your character feels without directly telling the reader.

---

---

---

---

---

---



# Show, Don't Tell

This character is overjoyed.



Describe their  
**facial expression.**

---

---

---

---

---

Describe their  
**body language.**

---

---

---

---

---

Describe their  
**actions.**

---

---

---

---

---

Now, write a descriptive paragraph which shows how your character feels without directly telling the reader.

---

---

---

---

---



# Show, Don't Tell

This character is in pain.



Describe their  
**facial expression.**

---

---

---

---

---

Describe their  
**body language.**

---

---

---

---

---

Describe their  
**actions.**

---

---

---

---

---

Now, write a descriptive paragraph which shows how your character feels without directly telling the reader.

---

---

---

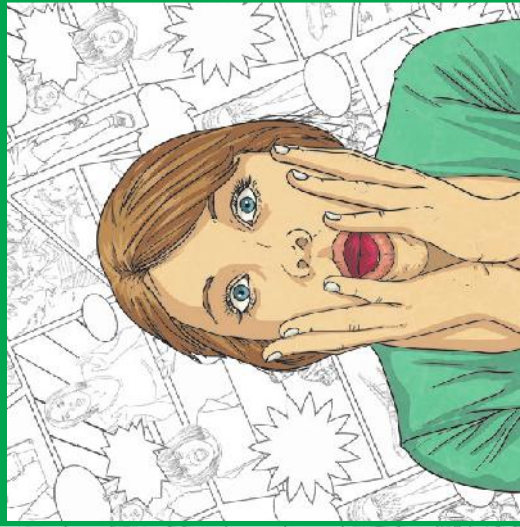
---

---



# Show, Don't Tell

This character is shocked.



Describe their  
**facial expression.**

---

---

---

---

---

---

Describe their  
**body language.**

---

---

---

---

---

---

Describe their  
**actions.**

---

---

---

---

---

---

Now, write a descriptive paragraph which shows how your character feels without directly telling the reader.

---

---

---

---

---

---

---

---

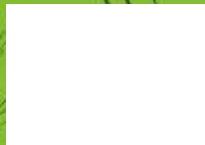
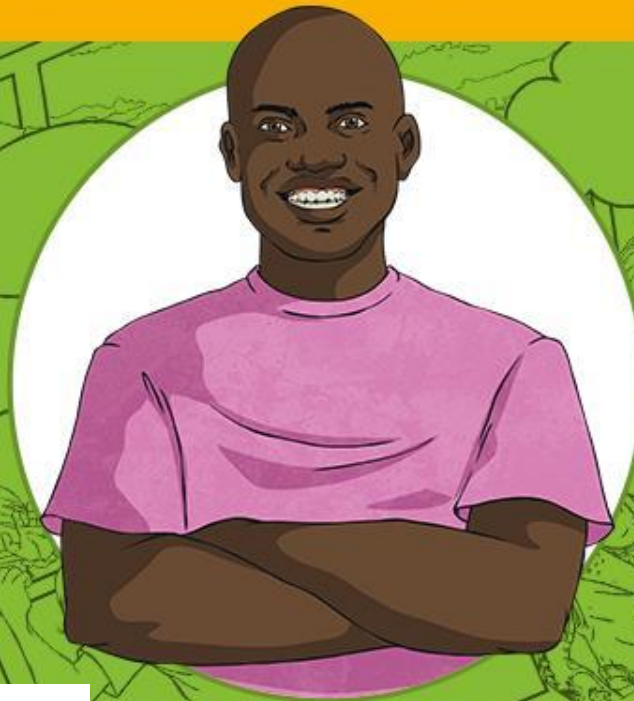
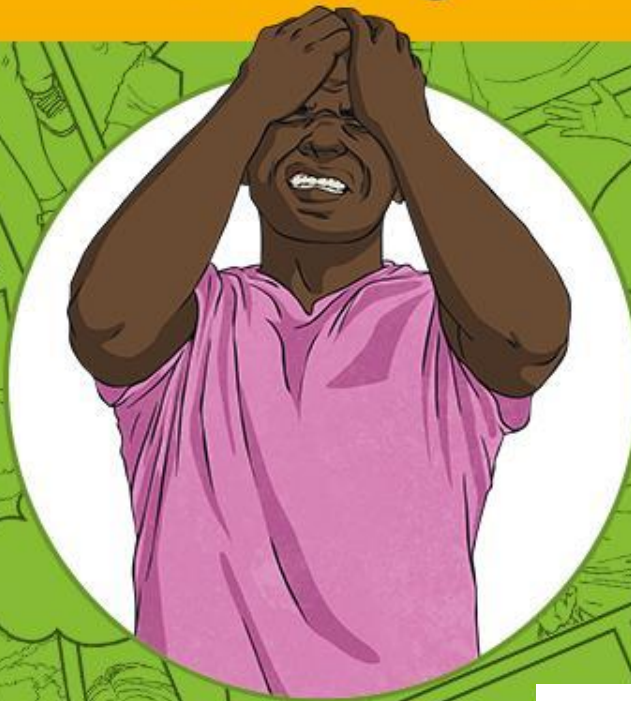
---

---



# Show, Don't Tell

Showing How Characters Feel



# How Are They Feeling?

Look at this photograph.  
How do you think that this person is feeling?

What makes you think that?



**Inference Iggy asks...**

Could they be feeling another emotion but still look the same?

Next

Next

# How Are They Feeling?

Now, look at another photograph of the same person.  
How do you think that they are feeling now?



What makes you think that?

**Inference Iggy asks...**

How do you know that their mood has changed?

Next

Next



# How Are They Feeling?

Finally, look at this photograph.  
How do you think that they are feeling now?



**Inference Iggy asks...**

What are they doing with their face and their body  
to make you think that?



Next

Next

# Showing Their Feelings

People rarely **tell** you how they are feeling using words.

their body language;

The way that you move your body and pose to show your attitudes or feelings.

← Back



Next

# Show Me Charades

Use the spinner to choose an emotion.



Show that emotion using your facial expression and body language.



Next

# Key Characteristics

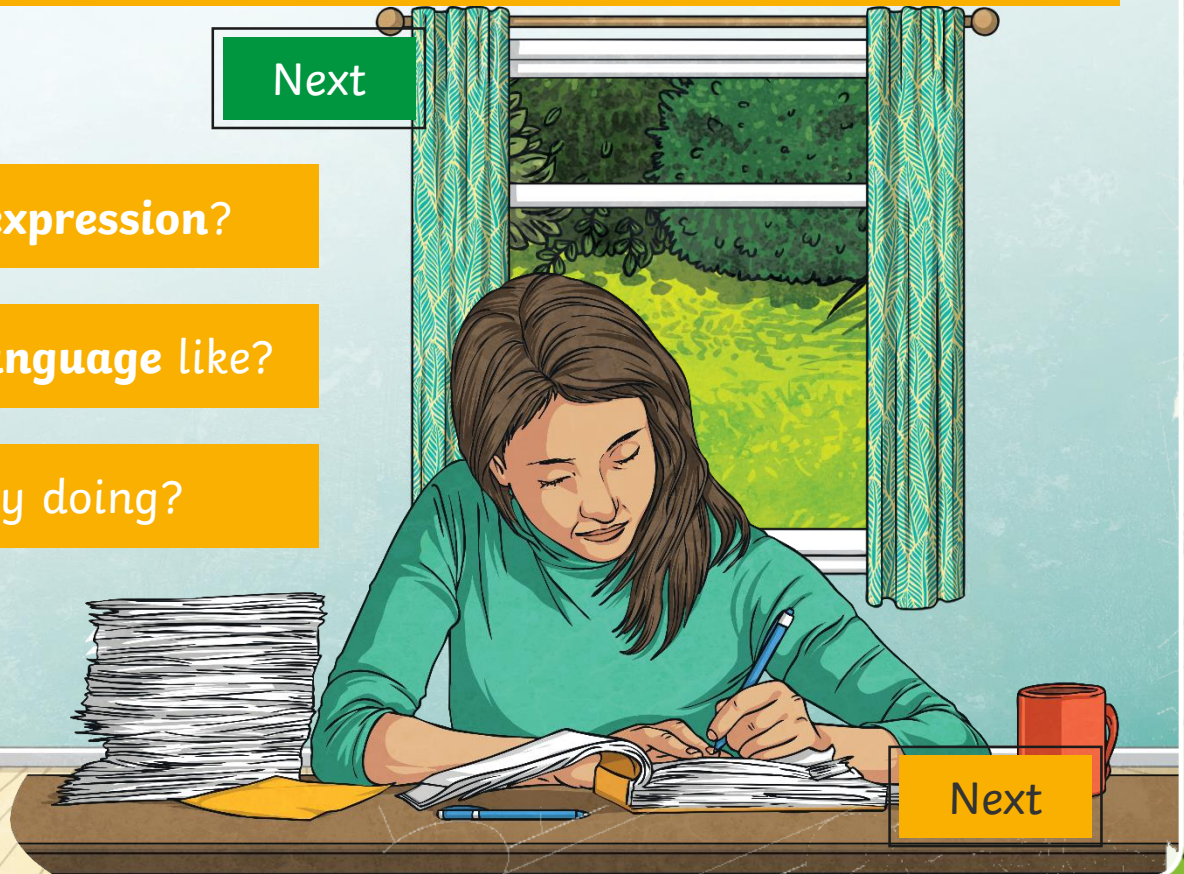
If you were asked to imagine somebody who feels **tired**, what picture springs to mind?

Next

What is their **facial expression**?

What is their **body language** like?

What **actions** are they doing?



Next

# Key Characteristics

If an author was trying to convey that a character is tired, they might write:

## Facial Expression:

'He looked expressionless but his mouth drooped downwards at the corners.'

## Body Language:

'His shoulders slumped and his arms hung lifelessly by his sides. His head slowly began to tilt downwards.'

## Actions:

'He opened his mouth and yawned, like a lion roaring in the savannah. His heavy eyelids lowered.'



Next

# Key Characteristics

If you were asked to imagine somebody who feels **cold**, what picture springs to mind?

Next

What is their **facial expression**?

What is their **body language** like?

What **actions** are they doing?



Next

# Key Characteristics

If an author was trying to convey that a character is cold, they might write:

## Facial Expression:

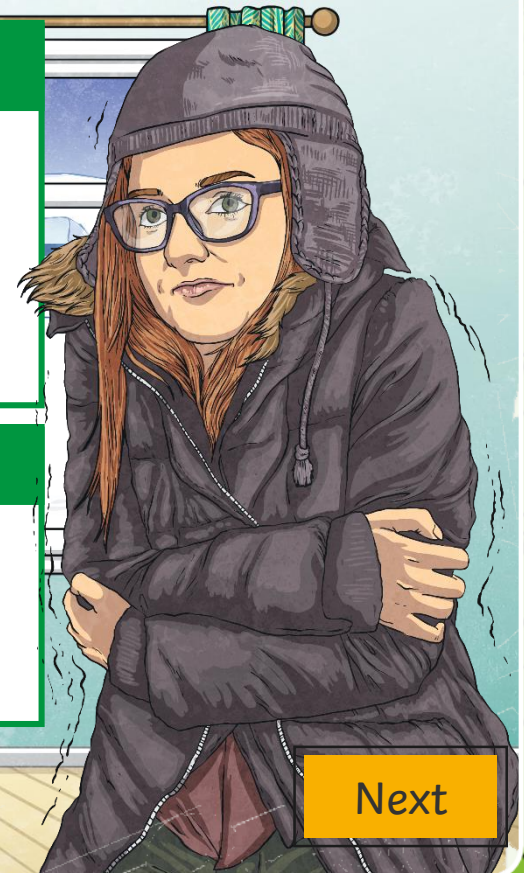
'Her brow was furrowed and her eyes narrowed as if she were struggling to see.'

## Body Language:

'Her shoulders touched her ears as her whole body tensed. She crossed her arms defensively.'

## Actions:

'Rubbing her hands together as if wringing a cloth, her teeth involuntarily chattered as she turned her back to the harsh wind.'



Next

# Key Characteristics

If an author was trying to convey that a character is cold, they might write:

For example, someone might get red cheeks if:

they are hot

they are shy

Body Language:

'Her shoulders touched her ears and her whole body tensed up as she crossed her arms

they are embarrassed

they are very angry

'Rubbing her hands together and holding a cloth

It is important to always be clear with your description so that the reader knows exactly how your character feels.



Next



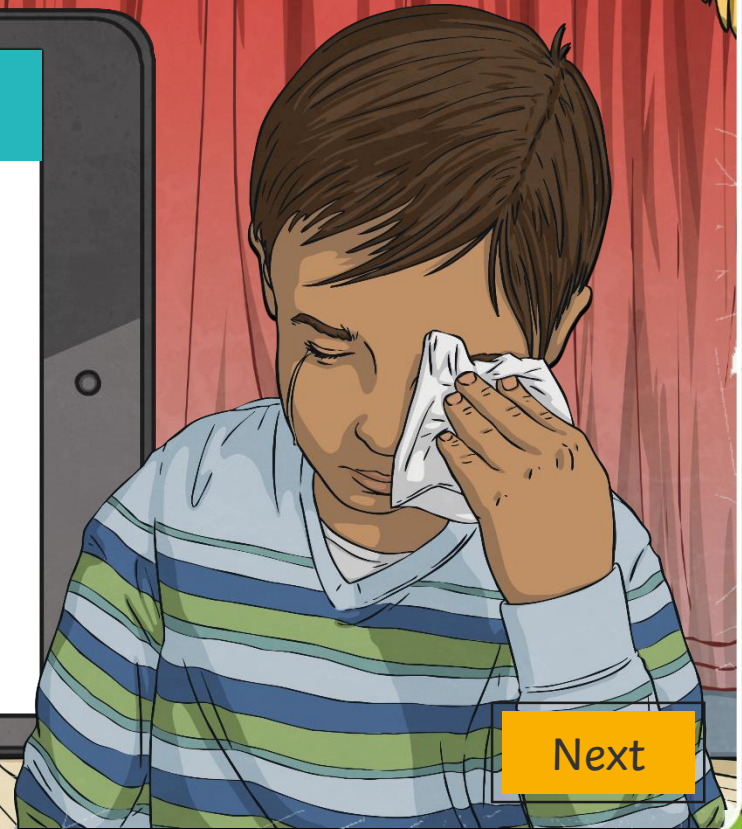
# Guess How

Read this character description and infer how the character feels.  
Think about how you know.



**Inference Iggy**

Sam lowered his gaze to the floor. Stifling a sniffle, he let out a pained sigh as he raised his tear-stained tissue and dabbed his eyes. His lip quivered like jelly and his heart ached as he thought about what Fran had just said.



Next



# Guess How

Read this character description and infer how the character feels.  
Think about how you know.



Inference Iggy

Erin's hands curled tightly into fists and she raised them to her chest. A broad, toothy grin painted itself across her face and her eyes squeezed shut. She could feel an almost electrical energy buzzing through her veins.



Next



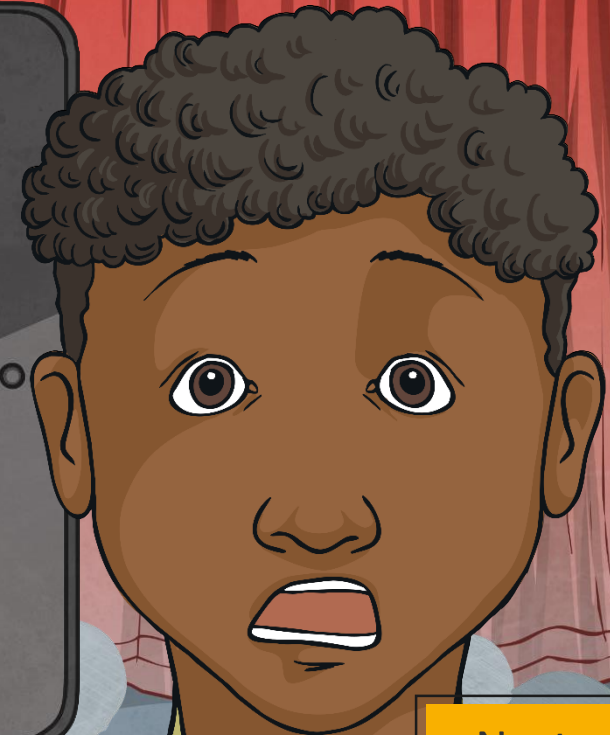
# Guess How

Read this character description and infer how the character feels.  
Think about how you know.



**Inference Iggy**

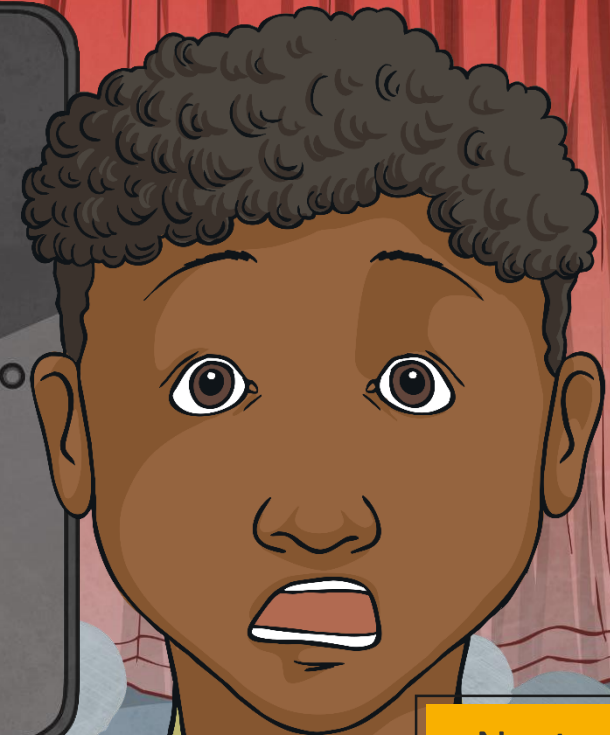
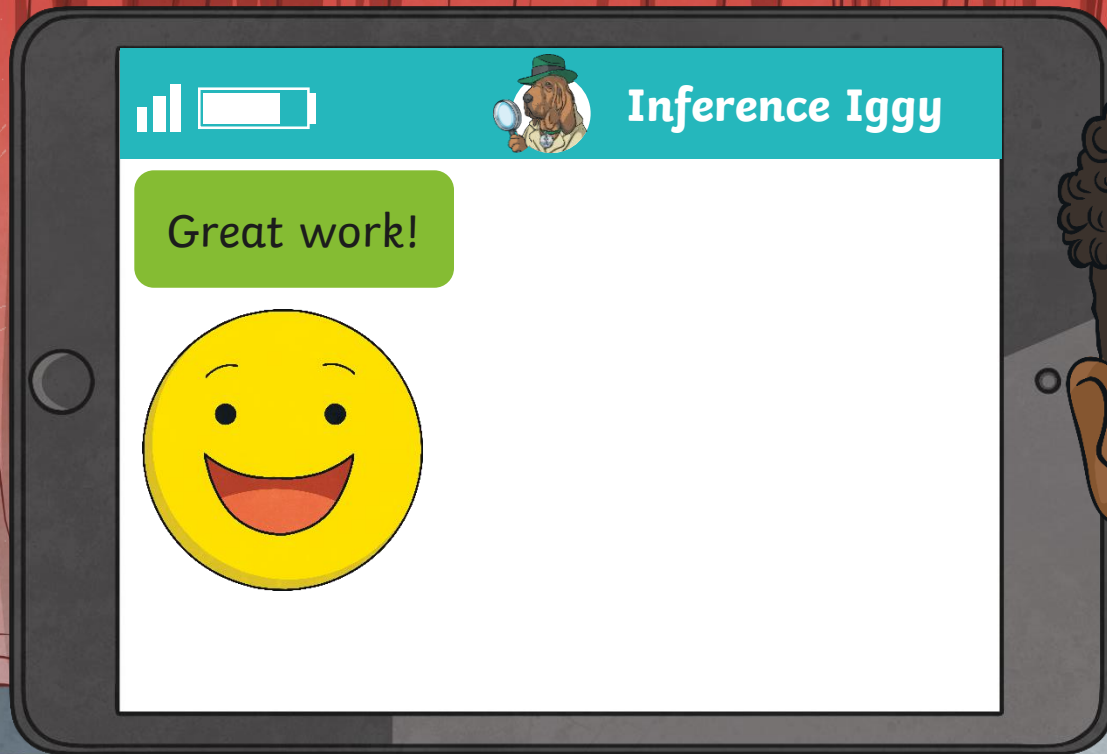
Renz's face dropped. His cheekbones lowered as his eyes became wider than he thought possible. His mouth gaped and he could feel his breathing quicken as his heart thumped in his chest. He stared intently at the door handle, recoiling backwards and instinctively trying to hide.



Next

# Guess How

Read this character description and infer how the character feels.  
Think about how you know.

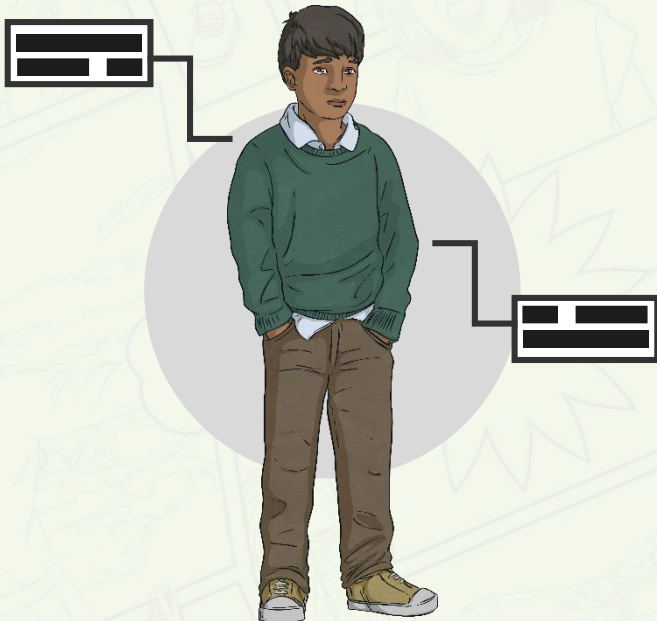


Next

# Shared Write

First, work out how the character is feeling.

Then, talk to your partner about their facial expression and body language.



## Show, Don't Tell

This character is **anxious**.



Describe their facial expression.

---

---

---

---

---

Describe their body language.

---

---

---

---

---

Describe their actions.

---

---

---

---

---

Now, write a descriptive paragraph which shows how your character feels without directly telling the reader.

---

---

---

---

---

Finally, work together to write a paragraph which shows how the character feels without directly telling the reader.



Finish

